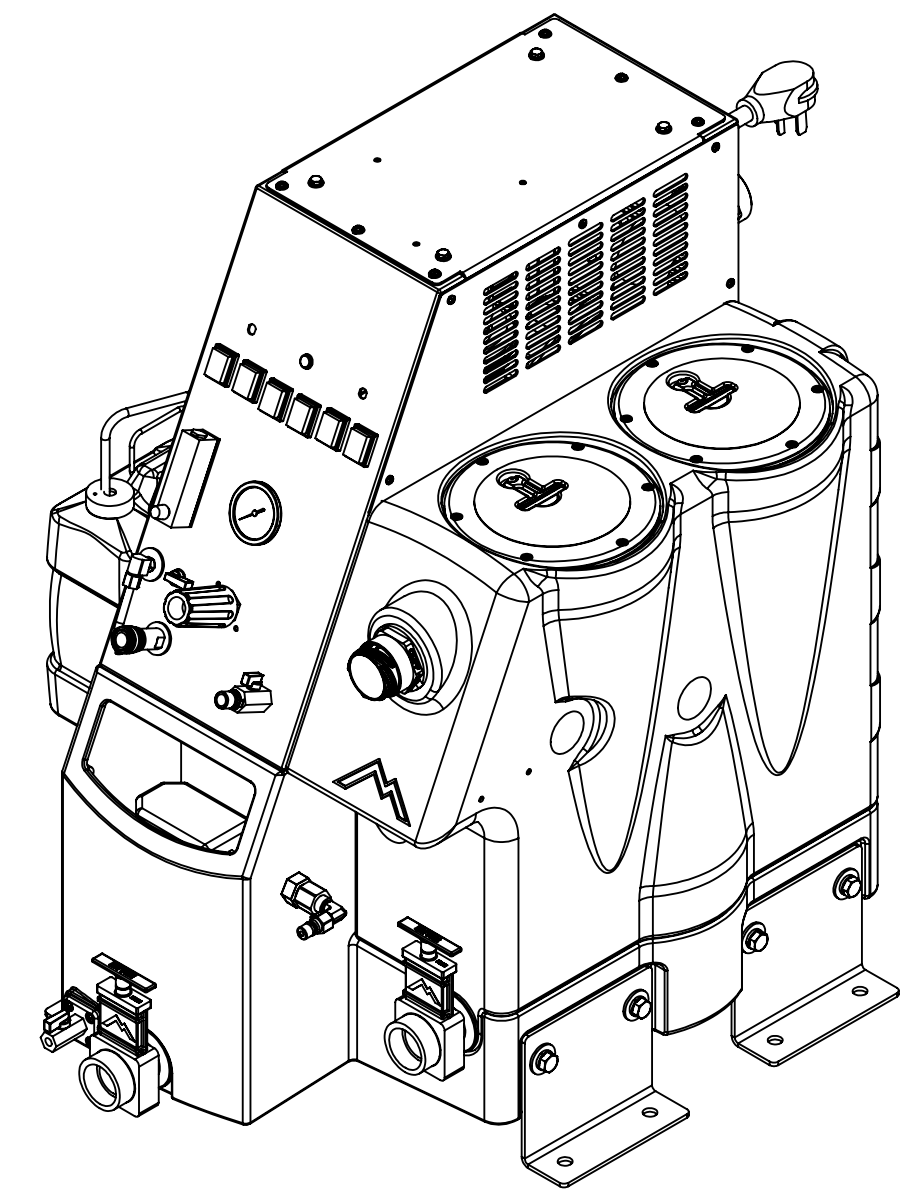


ITEM NO.	PART NO.	DESCRIPTION	QTY.
1	H230	screw, 10-32 x 1/2" phil pan head, s/s	28
2	P505	ETM Sol Tank / Chassis	1
3	H254	washer, axle, cut 1/2" id	12
4	H173	washer, lock, 1/2 med split, steel zinc	8
5	H174	bolt, 1/2-13 x 3/4, c/s, hex head	8
6	H523	bracket, mounting, tank, truckmount	4
7	H541A	valve, float, autofill	1
8	B198	adapter, 3/4" fgh x 1/2" mpt, w/ gasket	1
9	B199	coupler, 1/2" fpt x 1/4" fpt	2
10	B136	elbow, brass, 90 deg, 1/4" mpt x 1/4" mpt	3
11	B101	quick disconnect, 1/4" mqd x 1/4" fpt	1
12	B110	adapter, brass, 1/4" sw barb x 1/4" fpt, w/gasket	3
13	PH634-33	sol hose, 1/4", silicone braided, clear	1
14	B170	ferrule, 1/4" brass	5
15	B109	barb, 1/4" barb x 1/4" mpt	1
16	B656B	valve, ball, 1/4" fpt x 1/4" fpt, s/s	2
17	H484	plate, mounting, QD	1
18	H225	valve, drain, 1-1/2"	2
19	H387	washer, 0.82 ID x 1.44 OD	1
20	B656A	valve, ball, 1/2" mpt x 1/2" fpt, s/s	1
21	B205B	quick disconnect, 1/2" mpt x 3/4" mqd, garden hose	1
22	B208	coupling, 3/8" fpt x 1/4" fpt	6
23	B107	nipple, hex, 1/4" mpt x 1/4" mpt	5
24	B102	quick disconnect, 1/4" fqd x 1/4" fpt	1
25	B644	barb, 1/2" barb x 1/4" mpt	3
26	H347	clamp, hose, 5/16-29/32	5
27	PH634-24	sol hose, 1/4", silicone braided, clear	1
28	AH124	sol hose, pulse, 3/8" x 14.5", 1/4 FSW x 1/4 FPT	1
29	B103	elbow, 90 deg street, 1/4" mpt x 1/4" fpt	9
30	C359C	regulator, 1000 psi	1
31	PH634-36	sol hose, 1/4", silicone braided, clear	1
32	B135	tee, 1/4" mpt x 1/4" mpt x 1/4" mpt	2
33	H325	flow meter, electric truckmount	1
34	G069	gasket, flow meter	1
35	B129	nipple, hex, 1/8" mpt x 1/8" mpt	2
36	B153	coupling, 1/8" npt, light pattern	2
37	H308D	gauge, pressure, 2000 PSI	1
38	B130	45 deg, street elbow, brass, 1/4" male NPTF	1
39	E515	switch, rocker, 2 position	6
40	E512B	light, indicator, blue	1
41	H012C	instrument panel, ETM Plus	1
42	H196	support, pump, truckmount	1
43	H210	washer, 1/4" flat, s/s	2
44	H213	washer, 1/4" lock, s/s	7
45	H203	bolt, 1/4-20 x 1-1/4" hex head, s/s	6
46	H211	washer, 1/4" id x 1" od, flat, s/s	2
47	H201	bolt, 1/4-20 x 1/2" hex head, s/s	2
48	AH203	hose, pulse, 3/8" x 34", (OAL)	1
49	B123	adapter, brass, 1/2" barb x 1/4" fpt	1
50	B119	filter, strainer, 1/4"	1
51	B173	ferrule, 1/2", brass	1
52	PH615-18	sol hose, 1/2", silicone braided, clear	1
53	B131	barb, 1/4" barb x 1/8" mpt	2
54	PH634	sol hose, 1/4", silicone braided, clear	1
55	B105	bushing, brass, 3/8" mpt x 1/4"	3
56	B186	elbow, 90 deg street, 3/8" mpt x 3/8" fmpt	1
57	B142	coupling, 1/4" fpt x 1/4" fpt	3
58	B652	elbow, 90 deg, 3/8" mpt x 1/4" mpt	4
59	C359A	pump, 1200 psi, 50/60 hz, pumptec, 230v, 180 cam	1
60	H333	filter, mesh, auto dump, 1/2" npt	1
61	B210	bushing, brass, 1/2" mpt x 3/8" fpt, hex	3
62	B108	valve, brass, 1/4" check	1

ITEM NO.	PART NO.	DESCRIPTION	QTY.
63	B303	nipple, 3" long x 1/4" npt x 1/4" npt	1
64	B207	elbow, brass, 90 deg, 1/4" fpt x 1/4" fpt	1
65	H135V	Cuff-Lynx, 2" male cuff x 2" mpt, vinyl	1
66	H073A	coupler, 2.5" dia x 7.0", ss	1
67	H217	clamp, hose, 2-1/4 dia	6
68	A926	elbow, inlet assembly 2"	1
69	B113	tee, 1/4" fpt x 1/4" fpt x 1/4" fpt	2
70	E373	level switch, vacuum shut-off, rear threads	3
71	B111	adapter, brass, extender, 1/4" mpt x 1/4" fpt, hex	1
72	H876	washer, 1/2", flat	1
73	C347A	vac motor, lx, hybrid, 173 cfm, 220v	1
74	G100	gasket, air series manifold	1
75	H469	bracket, vac motor, 6.6"	1
76	C348A	vac motor, lx, hybrid, w/inlet tube, 173 cfm, 230v	2
77	H096	bolt, hex, 1/4-20 x 4", zinc Finish	3
78	H503	vac support, 3 stage, 3.25", no thrds	3
79	PH628-11	vac hose, 2", black, wire reinforced	1
80	PH633-2	pipe, pvc, 1-1/2"	2
81	P520	adapter, 1.5" mpt pvc	2
82	H244	adapter, pvc, 1-1/2" fms x fmpt	2
83	PH633-1	pipe, pvc, 1-1/2"	2
84	G097	filter, screen mesh, 1.90" dia	2
85	G003	filter, foam, 2", vac stack, 1/2"	2
86	P508	deflector, LX \ ETM	1
87	G091	gasket, 7", vac lid	2
88	G090	lid, vac tank, clear, 7"	2
89	H304	screw, #8 x 5/8 phil oval, s/s	15
90	P506	ETM Vac Tank	1
91	H265	float, ball style, ETM	1
92	H009	side panel, truckmount	1
93	P534	bottle, 7 quart, w/ caps	1
94	H456B	cap (only) w/ hole	1
95	H547	hanger, wire for injection sprayer	1
96	B117	strainer, with check, chemical injector	1
97	PH634-25	sol hose, 1/4", silicone braided, clear	1
98	G036	cap, 2.5" threaded, tethered	1
99	PH628-11	vac hose, 2", black, wire reinforced	1
100	H768	bolt, 1/4-20 x 3/4" serrated hex flange, zinc	6
101	H471	standoff, motor, 6"	3
102	H062	vac mounting plate, ETM	1
103	H010	top panel, truckmount	1
104	H289	washer, 10 flat, s/s	6
105	H210	washer, 1/4" flat, s/s	4
106	H216	nut, lock, 1/4-20, nylon insert, s/s	4
107	E564	controller, circuit light, audible	1
108	PH628-17	vac hose, 2", black, wire reinforced	1
109	PH628-11	vac hose, 2", black, wire reinforced	1
110	H011	back panel, truckmount	1
111	H124V	CUFF-LYNX, 2" female cuff X 2" male thread starter cuff	2
112	E908	cord, 4' black	1
113	PH615K	sol hose, 1/2", polywire reinforced	1
114	C381A	pump out, 230v	1
115	H001	side panel, small, truckmount	1

ITEMS NOT SHOWN

PART NO.	DESCRIPTION	QTY.
A959	harness, electrical	1
E351	power cord, ext, 50', 12/3, twist lock	2
H106	Cuff-Lynx, 2" hose x 2.5" female	1
H107	Cuff-Lynx 2.5" hose x 2.5" f swivel	1
H294	vac hose, 1-1/2" x 25' SW	1
H205	cam & groove fitting 1-1/2", female w/ lock	1
5003	electrical adaptor ETM - 3 prong	1
5004	electrical adaptor ETM - 4 prong	1
ADM-ETM	ETM manual	1



NAME	DATE	<b>MYTEE</b> 858-679-1191	
DRAWN M.LaBarbera	12/2019		
CHECKED		TITLE: <b>ETM</b>	
COMMENTS:		PROPRIETARY AND CONFIDENTIAL THE INFORMATION CONTAINED IN THIS DRAWING IS THE SOLE PROPERTY OF MYTEE LLC. ANY REPRODUCTION IN PART OR AS A WHOLE WITHOUT THE WRITTEN PERMISSION OF MYTEE LLC IS PROHIBITED.	
SIZE	DWG. NO.	REV	
<b>C</b>	<b>ETM-LX-PLUS</b>	<b>OD</b>	
SCALE: 1:8	DO NOT SCALE DRAWING	SHEET 1 OF 5	

8

7

6

5

4

3

2

1

F

E

D

C

B

A

F

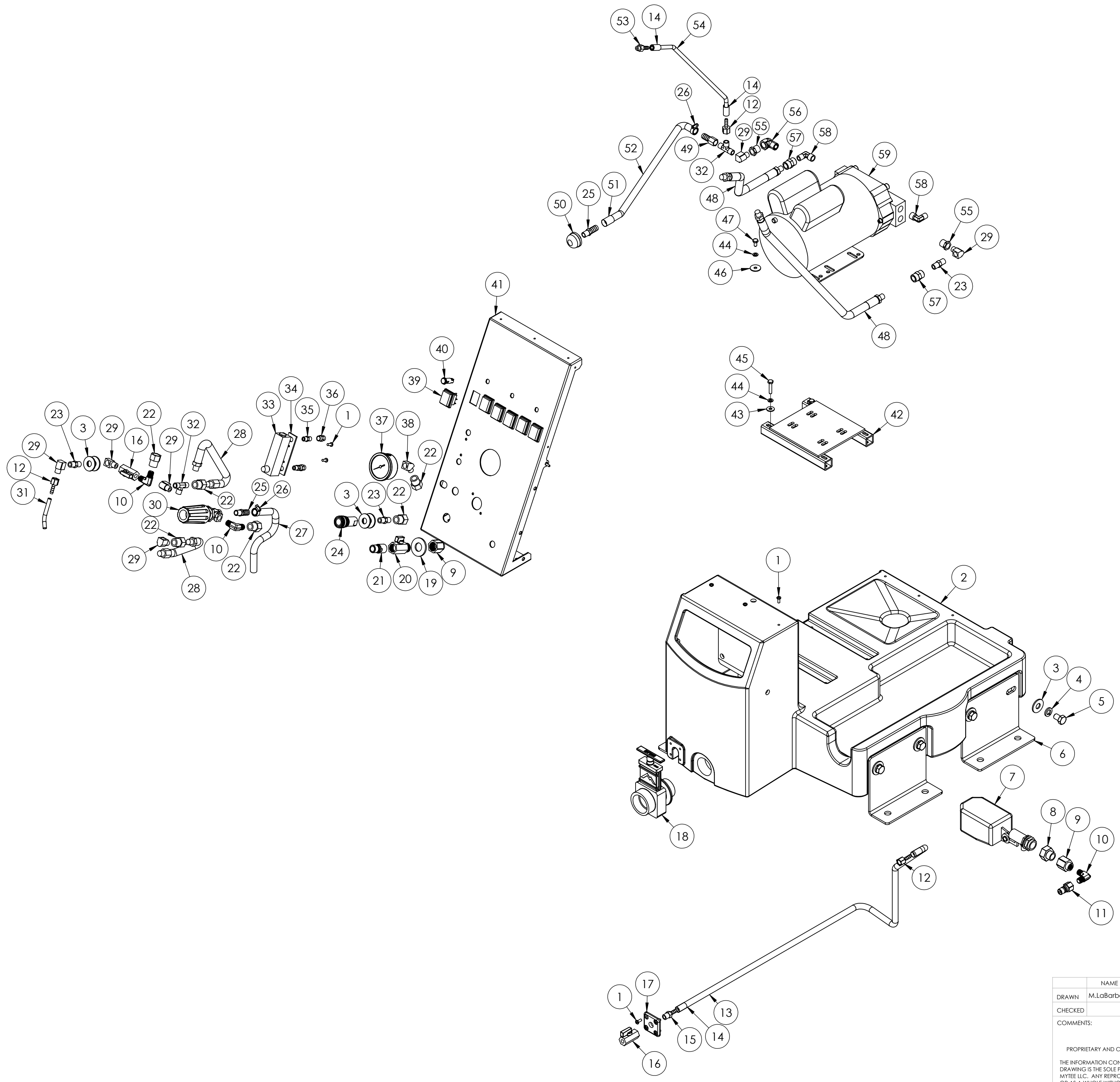
E

D

C

B

A



	NAME	DATE	<b>MYTEE</b>	
DRAWN	M.LaBarbera	12/2019	858-679-1191	
CHECKED			TITLE:	
COMMENTS:			<b>ETM</b>	
<small>PROPRIETARY AND CONFIDENTIAL THE INFORMATION CONTAINED IN THIS DRAWING IS THE SOLE PROPERTY OF MYTEE LLC. ANY REPRODUCTION IN PART OR AS A WHOLE WITHOUT THE WRITTEN PERMISSION OF MYTEE LLC IS PROHIBITED.</small>			SIZE	DWG. NO.
			<b>C</b>	<b>ETM-LX-PLUS</b>
			SCALE: 1:8	REV <b>OD</b>
			DO NOT SCALE DRAWING	SHEET 2 OF 5

8

7

6

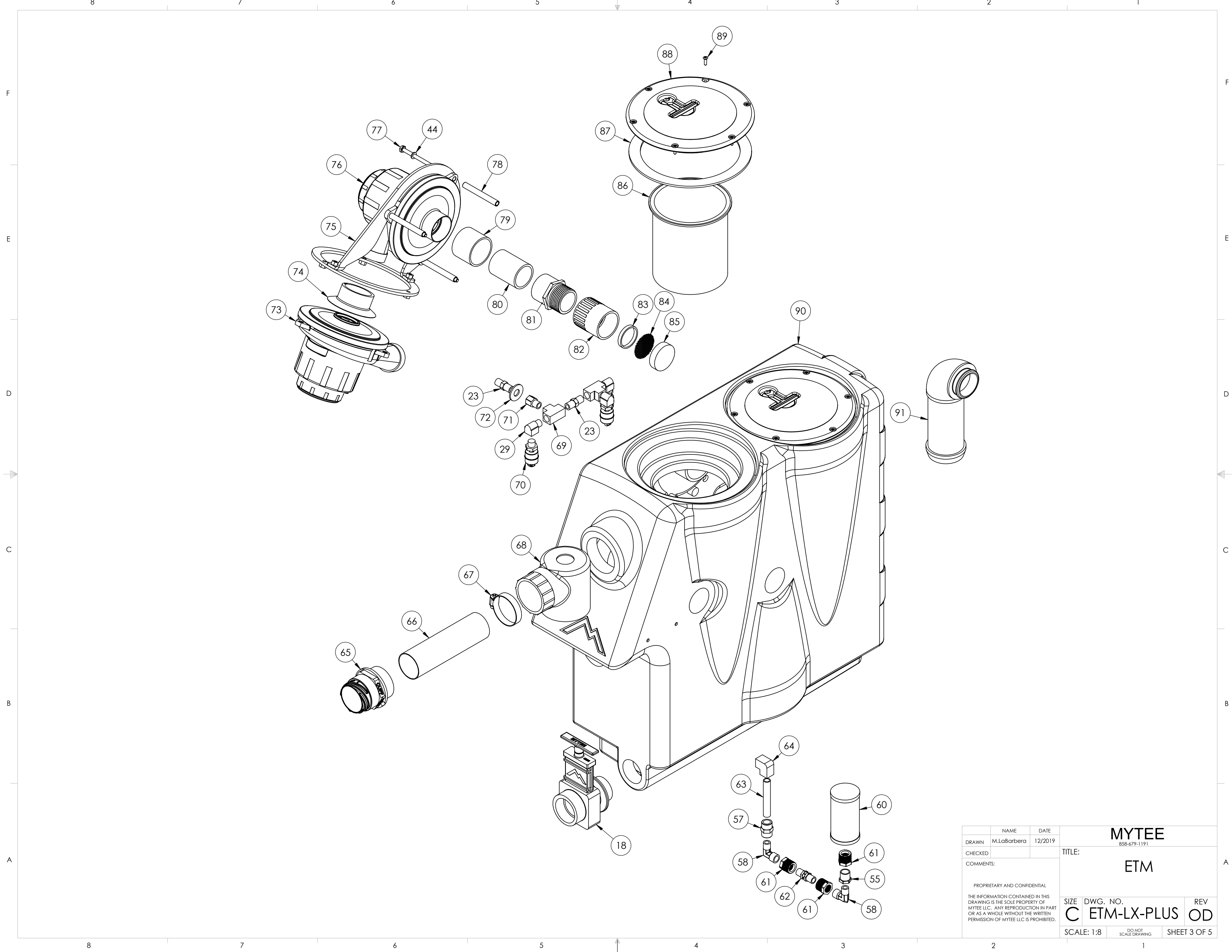
5

4

3

2

1



	NAME	DATE	<b>MYTEE</b>	
DRAWN	M.LaBarbera	12/2019	858-679-1191	
CHECKED			TITLE:	
COMMENTS:			<b>ETM</b>	
<small>PROPRIETARY AND CONFIDENTIAL THE INFORMATION CONTAINED IN THIS DRAWING IS THE SOLE PROPERTY OF MYTEE LLC. ANY REPRODUCTION IN PART OR AS A WHOLE WITHOUT THE WRITTEN PERMISSION OF MYTEE LLC IS PROHIBITED.</small>			SIZE	DWG. NO.
			<b>C</b>	<b>ETM-LX-PLUS</b>
			SCALE: 1:8	REV <b>OD</b>
			DO NOT SCALE DRAWING	SHEET 3 OF 5

8

7

6

5

4

3

2

1

F

E

D

C

B

A

F

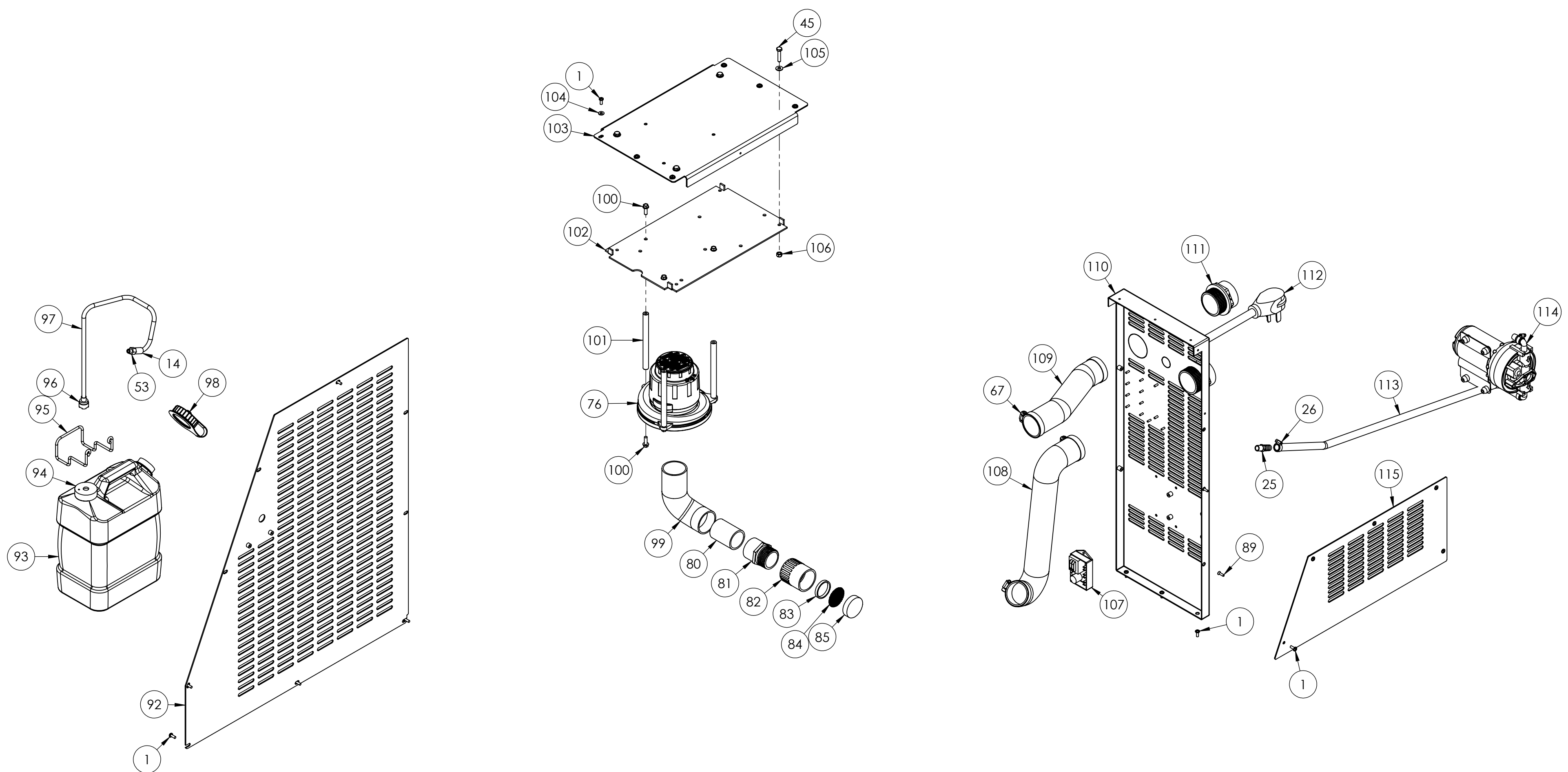
E

D

C

B

A



	NAME	DATE	<b>MYTEE</b>	
DRAWN	M.LaBarbera	12/2019	858-679-1191	
CHECKED			TITLE:	
COMMENTS:			<b>ETM</b>	
<small>PROPRIETARY AND CONFIDENTIAL          THE INFORMATION CONTAINED IN THIS DRAWING IS THE SOLE PROPERTY OF MYTEE LLC. ANY REPRODUCTION IN PART OR AS A WHOLE WITHOUT THE WRITTEN PERMISSION OF MYTEE LLC IS PROHIBITED.</small>			SIZE	DWG. NO.
			<b>C</b>	<b>ETM-LX-PLUS</b>
			SCALE: 1:8	REV
			DO NOT SCALE DRAWING	<b>OD</b>
			SHEET 4 OF 5	

8

7

6

5

4

3

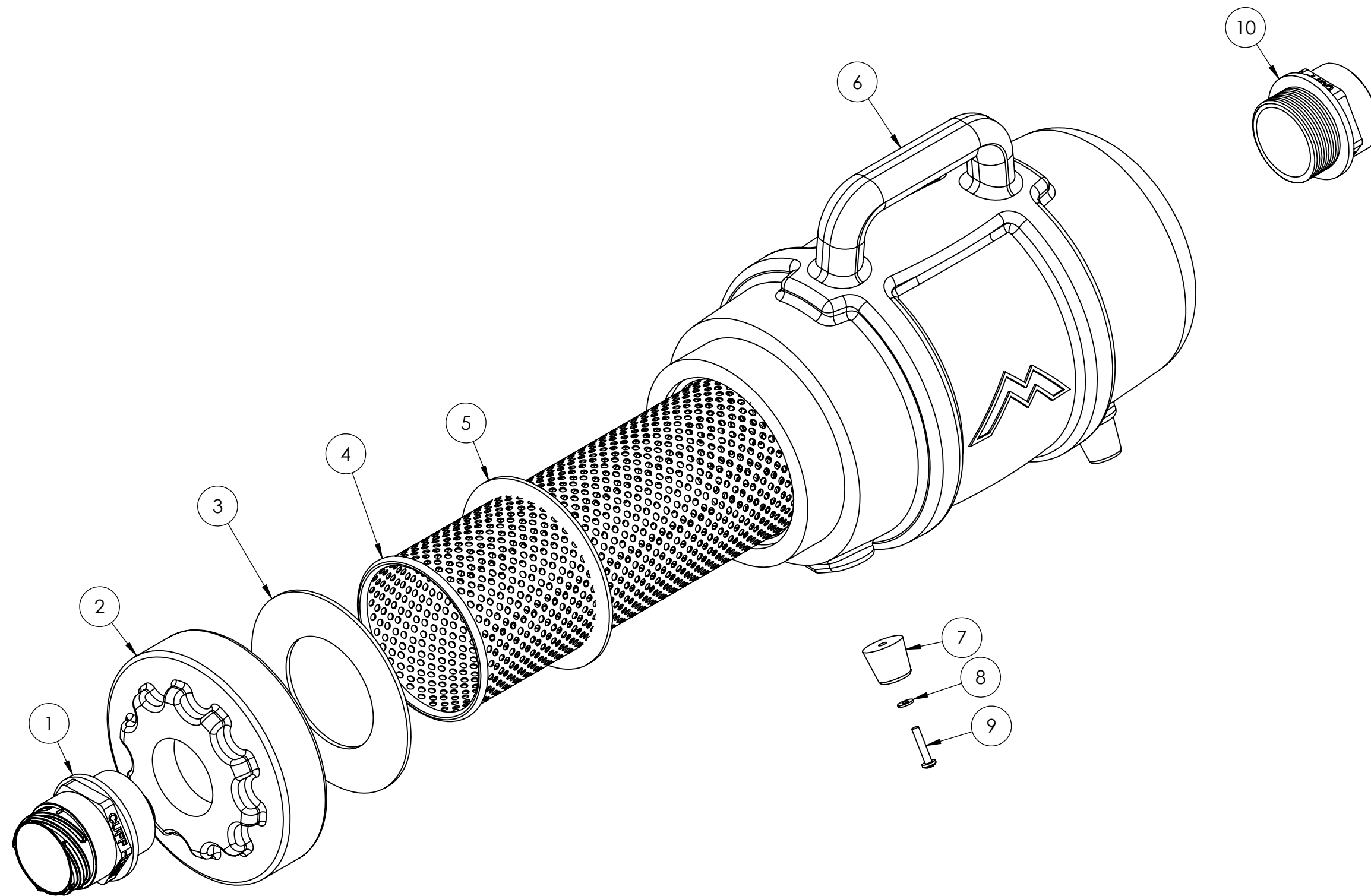
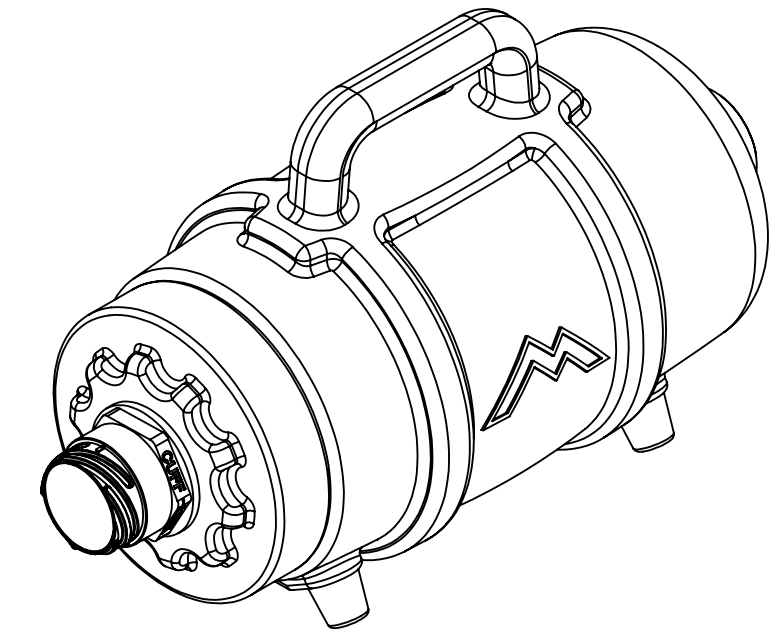
2

1

ITEM NO.	PART NO.	DESCRIPTION	QTY.
1	H135V	Cuff-Lynx, 2" male cuff x 2" mpt, vinyl	1
2	P561	cap, 6", threaded, w/ 2" npt	1
3	G031	gasket, 3.25" i.d. x 5.80" o.d.	1
4	H359A	bag, mesh, filter, w/stainless steel, ring, F200	1
5	G084	gasket, 4.55" x 5.5"	1
6	P563A	body, lint hog, new style	1
7	G211	rubber feet, 1-1/8" bas diag, 1" height	4
8	H612	washer, 8 flat, black ox	4
9	H231	screw, 10-32 x 1" phil pan head, s/s	4
10	H124V	CUFF-LYNX, 2" female cuff X 2" male thread starter cuff	1

ACCESSORIES NOT SHOWN

PART NO.	DESCRIPTION	QTY.
ADM-F200	manual, lint hog, QR codes	1
G008	SEE PAK NUMBER black piglet filters - bag of 25	1
H110	Cuff-Lynx, 2" hose x 2" f swivel	1
H136	Cuff-Lynx, 2" hose x 2" male swivel	1
H141	Cuff-Lynx, 2" hose to 1.5" reducer	1



	NAME	DATE	<b>MYTEE</b>	
DRAWN	M.LaBarbera	4/2010	858-679-1191	
CHECKED			TITLE:	
COMMENTS:			<b>Lint Hog</b>	
<small>PROPRIETARY AND CONFIDENTIAL THE INFORMATION CONTAINED IN THIS DRAWING IS THE SOLE PROPERTY OF MYTEE LLC. ANY REPRODUCTION IN PART OR AS A WHOLE WITHOUT THE WRITTEN PERMISSION OF MYTEE LLC IS PROHIBITED.</small>			SIZE	DWG. NO.
			<b>C</b>	<b>ETM-LX-PLUS</b>
			SCALE: 1:3	REV
			DO NOT SCALE DRAWING	<b>OD</b>
			SHEET 5 OF 5	